

An extended introduction

- Department of Interdisciplinary Studies of Culture
- SHAPE ENERGY
- CenSES
- [Making Gender balance from below]

And a slight bit of my own research



Department of Interdisciplinary Studies of Culture

- 50 employees
- Divided between STS and gender studies
- Dedicated research group on energy, climate and the environment
- Highly interdisciplinary
- Eager to contribute to larger projects





SHAPE ENERGY

SOCIAL SCIENCES AND HUMANITIES FOR
ADVANCING POLICY IN EUROPEAN ENERGY

- 2017-2019
- €2m investment through H2020
- Building a platform for SSH researchers shaping energy policy
- Multi-stakeholder workshops, conferences, theme reports, bibliographies, summer schools, etc. etc.
- NTNU and the department contributes with gender perspectives



Researcher Database

42

Business

15

Communication
Studies

32

Development

152

Economics

5

Education

123

Environmental Social
Science

13

Gender

23

History

67

Human Geography

32

Law

21

Philosophy

31

Planning

119

Politics

51

Psychology

86

Science and
Technology Studies

41

Social Anthropology

15

Social Policy

113

Sociology

3

Theology



CenSES

**Centre for
Sustainable Energy
Studies**

CenSES

- Highly interdisciplinary
- Involving business, stakeholders and policy makers

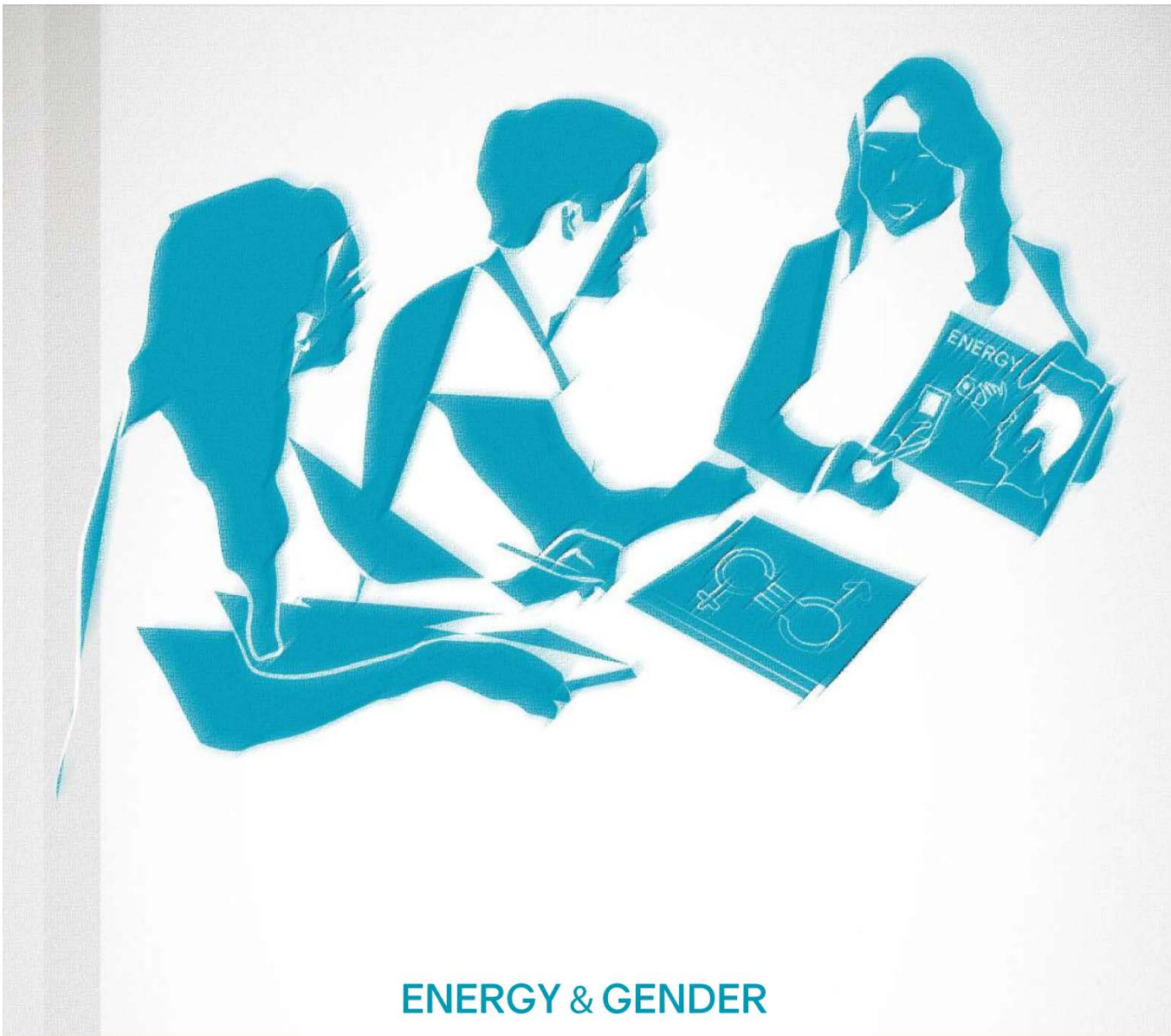
Goals:

Develop tools, models, strategies and scenarios

Developing and strengthen policy recommendations



Gender balance from below



ENERGY & GENDER

a social sciences and humanities
cross-cutting theme report

Themes reviewed

- **Energy Efficiency and Using Less**
- **Competitive, Secure, Low-Carbon Energy Supply**
- **Energy System Optimisation and Smart Technologies**
- **Transport Sector Decarbonisation**

As for my own research



Questions/contributions/help!?

martin.anfinсен@ntnu.no

