



Bioenergy and links to agriculture and LULUCF in a Nordic context

Nordic Energy Outlooks



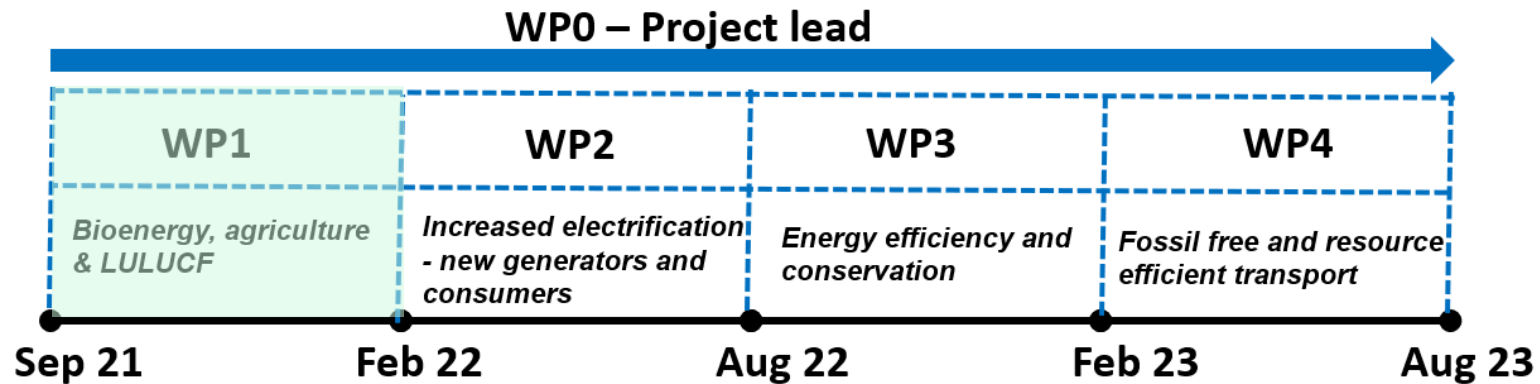


Research partners



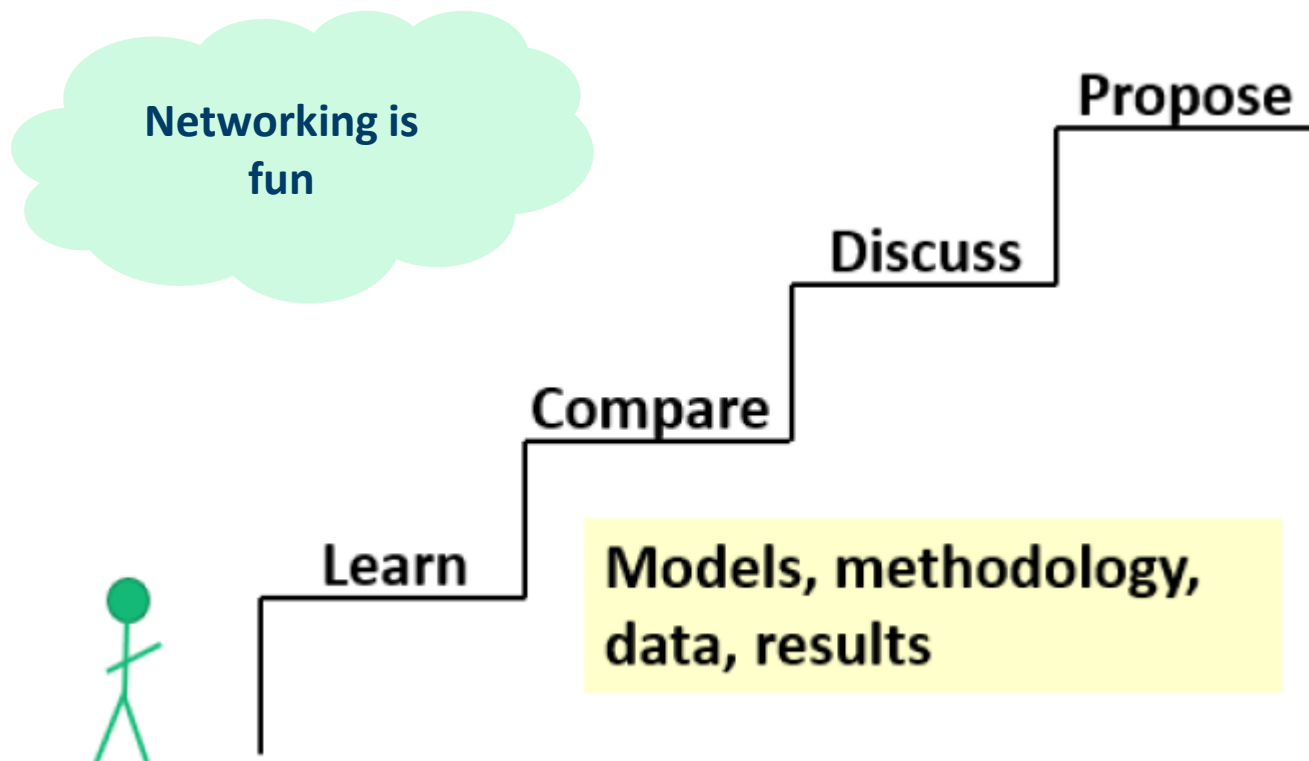
Purpose

Strengthen Nordic research competence and cooperation in the field of energy systems analysis, by building on existing national research programs





SINTEF



Networking is fun



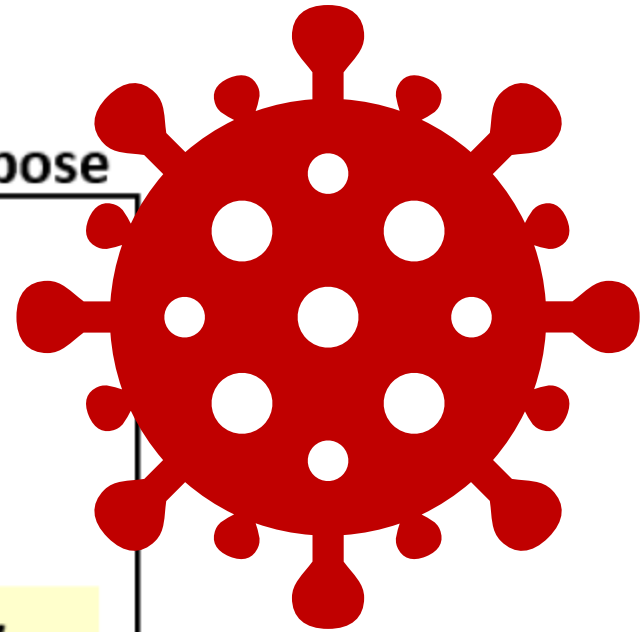
Learn

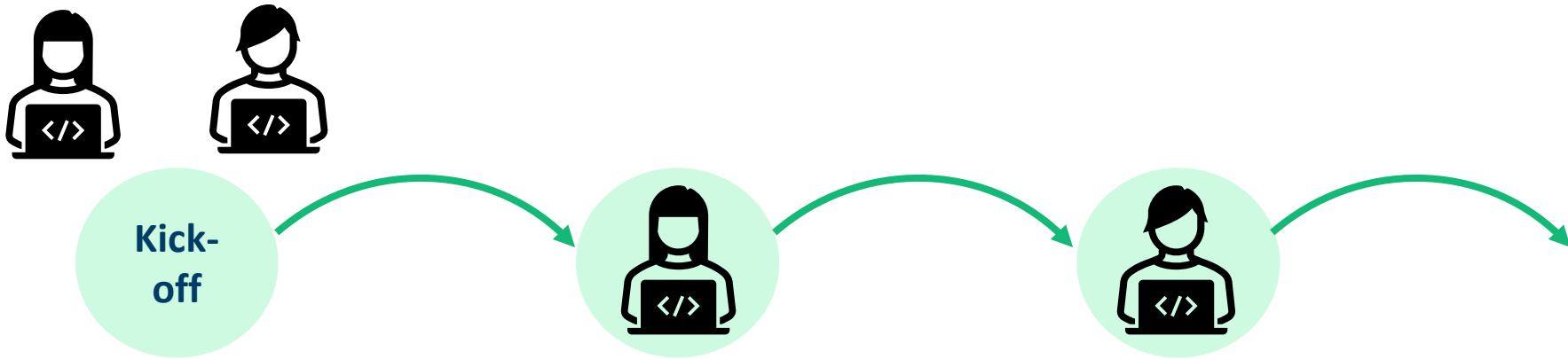
Compare

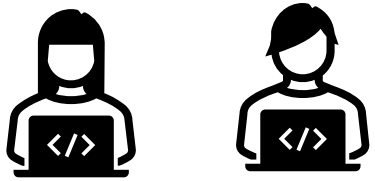
Discuss

Propose

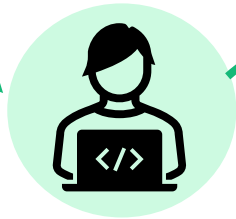
Models, methodology,
data, results



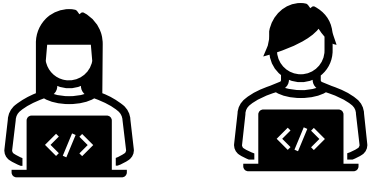




Kick-off



Trondheim,
November 2021



Kick-off



Trondheim,
November 2021



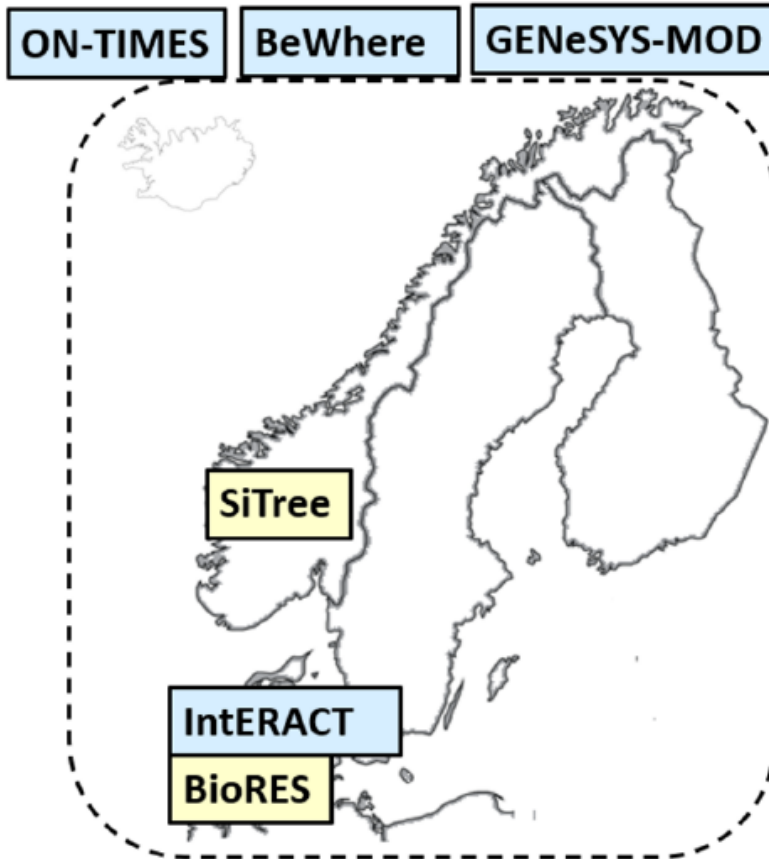


SINTEF

Models

Optimization models
Programmed in GAMS

Simulation models
Programmed in R,
Fortran, Excel, other



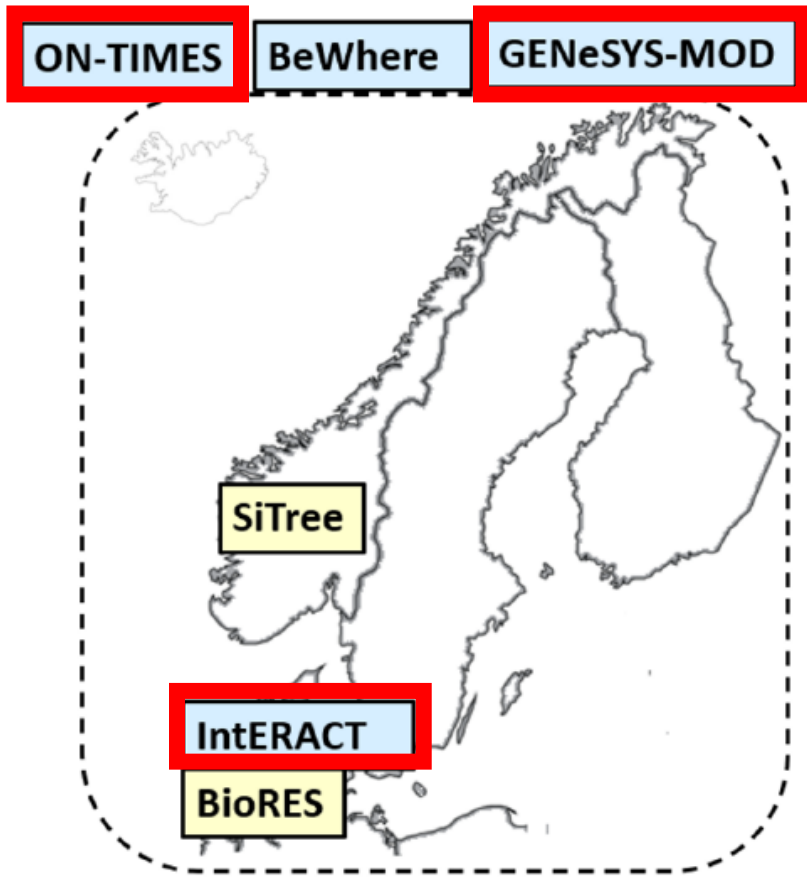


SINTEF

Models

Optimization models
Programmed in GAMS

Simulation models
Programmed in R,
Fortran, Excel, other



Energy system models



SINTEF

Models

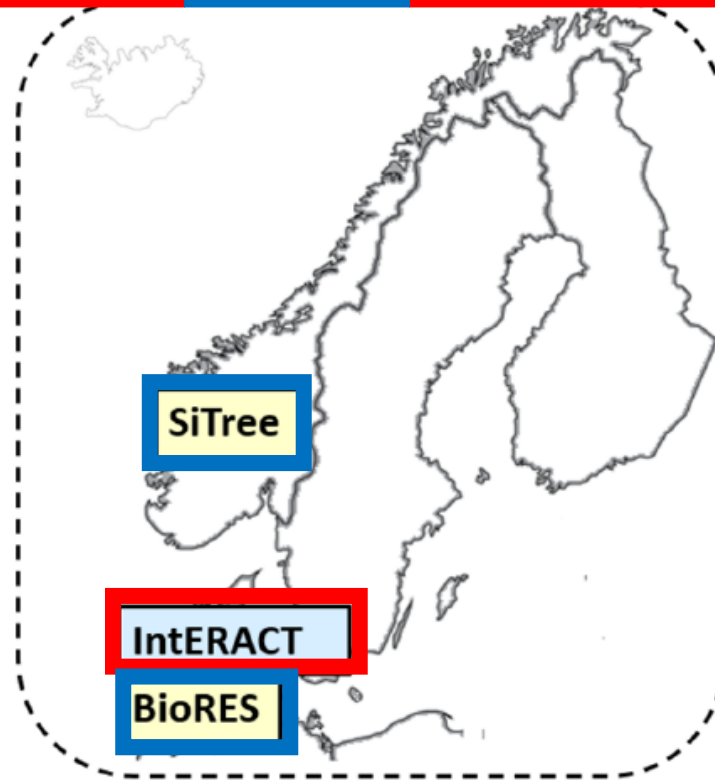
Optimization models
Programmed in GAMS

Simulation models
Programmed in R,
Fortran, Excel, other

ON-TIMES

BeWhere

GENeSYS-MOD



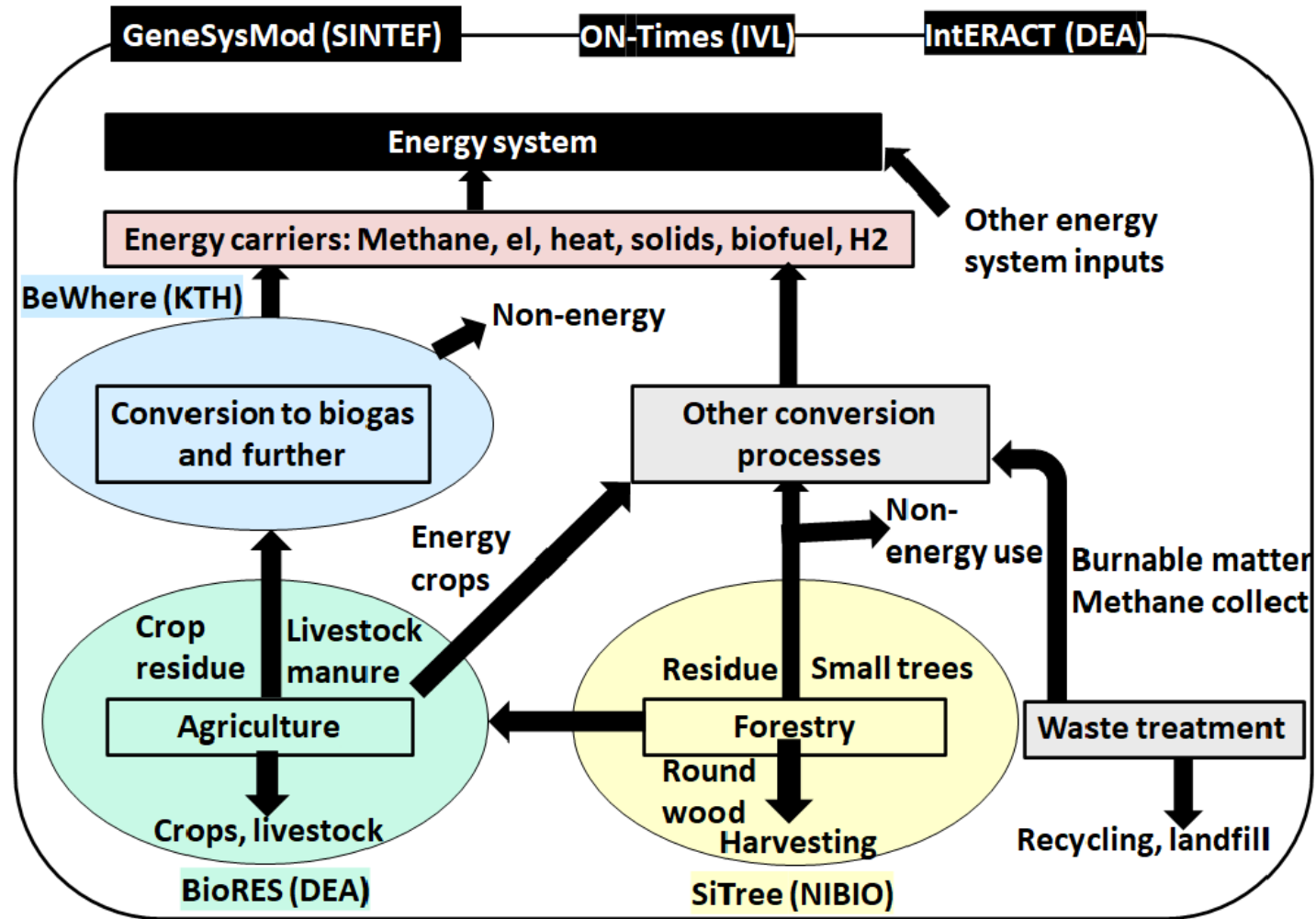
Energy system models

Domain-specific models



SINTEF

Model Interation





Individual work



NIBIO
NORWEGIAN INSTITUTE OF
BIOECONOMY RESEARCH

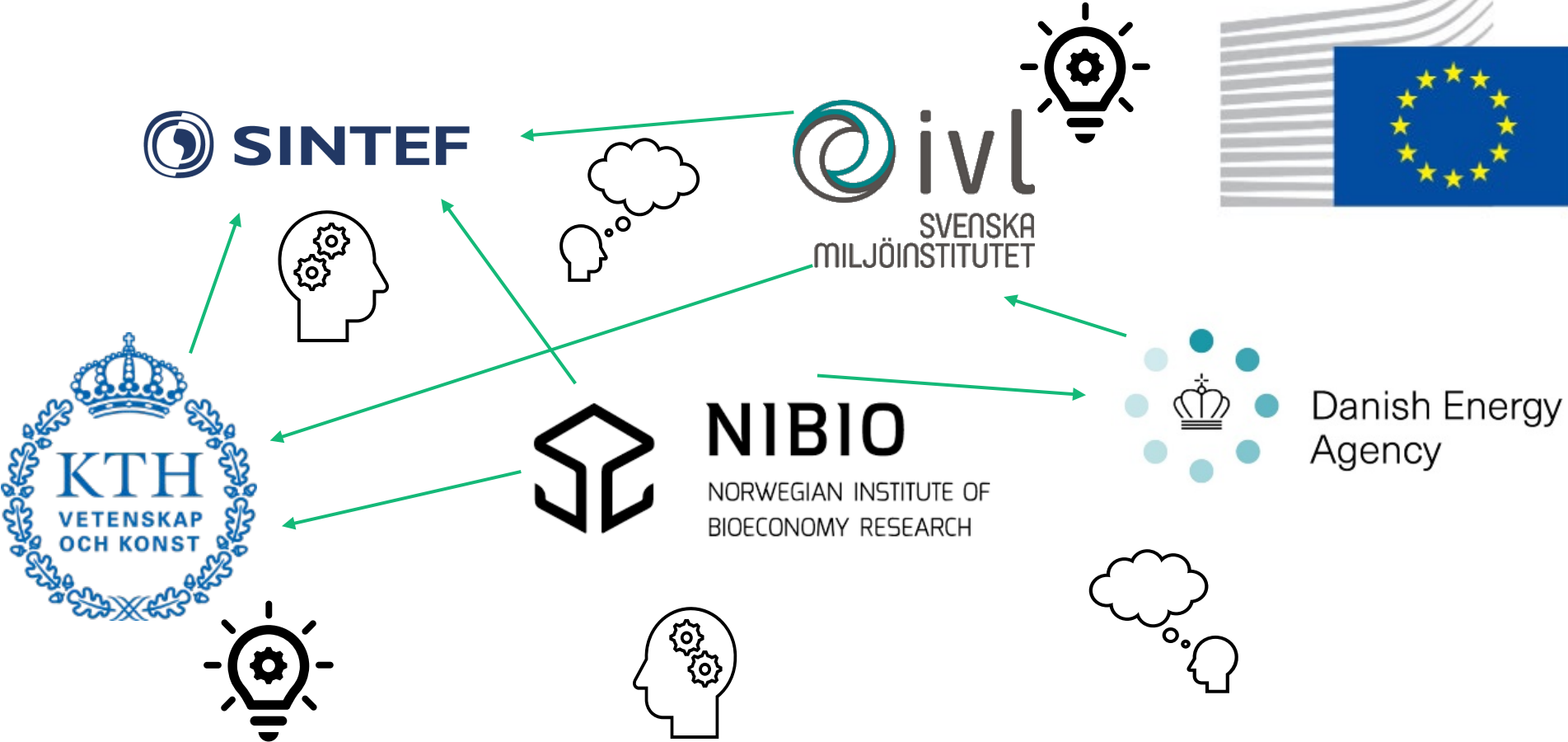


Danish Energy
Agency



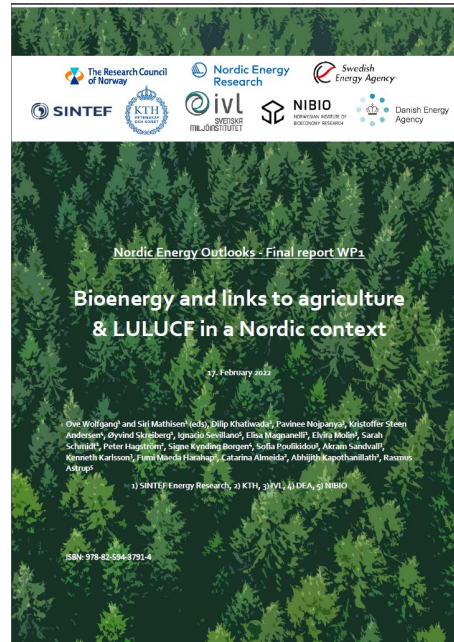


Individual work



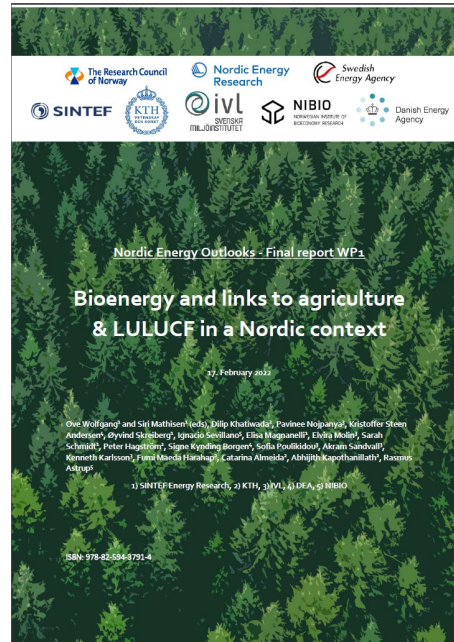


Final Report





Final Report





SINTEF

Takeaway

Bioenergy potentials

- Biomass residue potential for energy use might be larger than studies indicate → should be further investigated
- Research of energy system models requires open datasets and joint efforts and collaborations

Environmental impact assessment for bioenergy

- More studies on quantification of environmental impact on Nordic biomass sources are needed



Takeaway

Bioenergy potentials

- Biomass residue potential for energy use might be larger than studies indicate → should be further investigated
- Research of energy system models requires open datasets and joint efforts and collaborations

Environmental impact assessment for bioenergy

- More studies on quantification of environmental impact on Nordic biomass sources are needed



SINTEF

Technology for a
better society